




¡Tiyolicatzin Centro de Cultura Digital!



Tehuan titlacualcan in tlein mocatia in mochihua, teizcaltia, nahuatilia ihuan neyolnonotzalitzli, tlein in tlacayotl quichihua itechpan iuhcatiliz, tlacayohtica huan tominiliztica tlein hualquiza in yollocayohtica ihuan cecenmomoztla itech mapil tlacentlaliliznemachtilizyotl.

Totlachializ mocentlalia ipan neyolnonotzalitzli ixtlacoa ihuan *profesionalización* itech cente tetlahuiliztli *alternativas* inic mohuaxcatia in tlacentlaliliznemachtilizyotl ihuan quitlalia ipan nenemi in tlein mocuepatia in tlacayo nemiliztli huan iuhcatiliz.

Ticpia tlacualcan tlein cualli mohta ihuan ipan tlahuipanaloni ica inon toconmaca tepalehuia ipan matlatl in *profesionalización*, mayumachtiliztli, necoc platla, ailiztli, tlaxexeloliztli ihuan mochihua netlatolpepechtiliztli ma molinia in icelnemilz, in ixtlacoa, in mahyuneltoquilia ihuan in yeyechualiztli.

Cenca ticpia pahpaquiliztle mitzcelia ipan CCD. Ce tlacualcan inic ocuil toconnamictia in nematia itech in tlacentlaliliznemachtilizyotl huan iuhcatiliztilia in *técnica*.



TLALMANTLI IHUAN TEPOZHECAHUAZTLI

In tlalmantli in CCD yumocuep in tecpanquiahuac tlein monechicoa altepeme nepapan altepetl ihuan zazo cahtli tlacame. Nan ticchihua hueyi tlatzotzonalli, mecaixtlcopinalli tlaza ipan quiahuac, tictemaca mihtotilizmachtiztli tlapohtoc ica programa *Tlitl in tlalmantli*, titlailhuiquixtia in teixpan tlacualcan ica *In ohtli inic ilhuitl* huan titehuan in tlein ticate icecac in caltlatzacualli calacohuayan Chapultepec cuauhtlatli.

CIBERCAPOLATL

In capolanamacoyan in tlein molinia nochtlachah cualli calaqui huan quicohua ihuan ce tetlalhuiliztli ma tiquixmatiz in lyolohco. Ticpian tlacauhtin in campa cualli mocheuizque, no cualli ticcentlalia ica yei tlachah, tlai cente cafentzi, tequitihuan cualli timotzicuz ica matlatl.

AMANAHUATIA IN TLEIN ONCA

Ompaca ipan ilhuice calacohuayan, nican cualli tiquihtaz tlein onca in tlein mochihuaz cecen metztli, noihqui in tlanahuatiliz in tlein motechmonequi inic motechmotlalia ipan yehuan.

LEDS TEZCATLAMAHUIZOLLI TEZCAIXTLAHUAYO

Inin tezcatlamahuizolli onpia ica cente macho ixtlahuayo ipanin tictlapohtica tlamantin, itla yeyecoa huan tlanahuatia itechpancopa in tlein tohuaxca totequiuh ihuan nenextili.



TLACUALCAN




CATLACHIALOYAN

Cualli yectlia in tlein motechmonequiz in paxalohuani in tlein monequi cente tlacualcan in campa tequitihuaz, yehce noyuhqui ca tlanemilillo, inic teixpantiliz, hueyi tlatzotzonalli, xochitlahtolli ihuan caltlachihualuyan. Noyuqui, nican cualli necoc ticchihua ica inon *piezas* in *sitio* tlein ontlapoa in ipan tezcatlamahuizolli in *leds*.

CALTON IN CCD TEPOZHUEHCATLATZOTZONALONI

In moloni iyolohco in CCD tepozhuehcatlatzotzonaloni. Titlanalquixtia ipan nemi huan ticchihua *grabaciones* in *programas*, *podcasts*, tenamiquiliztin. Ica iuh tictlalia in toyollo tetlalhua tlein pano ica Napantla nochtontaltn, oticchihque in programa *Calton ontlapohtoc*, tlein in cecen chicomilhuaitl ticquixtia in calton ipan quiahvac huan tetlalhua nochtlachac matocopoacan tlein moyolmati huan quinemia ipan itla netlatolpepechtiliztli.

TLAIXOHTLI



Occe tlacautli moteihtitia ma ontlalhua ica tlazohtlachia xoxoccuauhtlatli ihuan ixexeloni in tlatzilintoltecayotl. Inon ca icecac in calacohuayan in cuautla Chapultepec, huan tlaixohtli temo in nepa ica nan onpano ipan tlapanacalli ontemo tlacxitla campa ca tetlalnamictiloni, in Foro polivalente, in tlihuapetlacalli ihuan mecatlaixcopinalcalli. Inin tlacautli noihqui cente calacoyan inic tlacelia tlacame Inon moixcatzoccocoa ihuan/nozo ammo cualli nenemi; noihqui toconpia ica ome tepozcaltlecoani inic tlacah ica huel monequi.

TETLALNAMICTILONI

In ixquixcauh motzintia in campa ihcatoc ye ompun ontlacati in tlahuilli maca Estela de Luz (“La Suavicrema”) ica cente mahuiz tlacentaliliznemachtilizyotl in caquiliztli, omotetechanequizqui pampa onchihua tlanextiliztica, caquiliztli, tlatzotzonaliztli in yeyecoliz, tlatzotzonalli ica mihtotiliztli, thaixcopinalolinia ihuan performances. Ca ichtacayotl huel onmalhuiya in hueyi in atl in altepetl Mexicco.

MIACTIN TECPANQUIHUAC

Quen itoca quitohua, in cente yeyantli in campa cualli mochihua miac tequitl tlein mach in ahmo neneuhqui: teixiptlatilizcalli yeyecoa, amoxihtiliz ihuan tlahuiltica ixpantilizme, tlachihualoyan, hueyi tlatzotzonaliztli nozo tetlaixpantiliz.

IN TLIHUAPETLACALLI

Ipanin tlaihua tlacahuiloyanton tiixtlacopinaltititlane tlaxexeloni in *net-art*, tlahuilamoxtlapohualiztli, *videoarte* ihuan mecatlaixcopinalli tlayeyecoahtica in mache.



PROGRAMAS

MECAIXTLACOPINALLI OCACHI CA NEPA

Toprograma in mecaixtlacopinalli moihtitia mecaixtlacopinaltin tlein ohuhtic tiquihtaz occecan; tla ticalaquiznequi ammo tlaxtlahuaz, yehce ammo miec tlacah anhuelli calaquiz ica tlein cemicac titlatlautia ma ammo ye tlahca tacez iquiun ticxeluz mocpal.

In *programación* ipanin xihuitl, *Nepapan mecaixtlacopinalli*, quinequi onihtitiaz tlein mopia motechmotlalihtica, in tlaqaquihua, tenonotzalitzli ihuan yeyecolitzli tlein oncahua ma motzicuz in nepapan altepeme tlein onnacayochihua in CCD. Motemoa onchihuaz in tlayeyecohua mecaixtlacopinaltica in ixquixcauh tlayehualohua mecatlaixtlacoponalli, in *género*, in tepalehuizcemanahuac ihuan nepapan iuhcatiliztli.

TEIZCALTILIZTLI

Toprograma itech teizcaltilia tlein mocentlalia tequite teixpa ihuan no ica tlahuipanaloni ihuan inahuan tlein onihta ma contlalilia in temachtiliztin ica tepozchichihualoni mahpilhuantica.

In *programa* onpano ica yei tepilolli: *inclusión*; tlachihuallo tlein mopia ihuan ilnamiqui iztlacahui itechpa ohtli in cenquizqui tequime ihuan yolalia ipan *medios* mapilhuitica.

Quipiya tlachihualoyan, in iyotzin in tlahtolli, ihuan ailiztin onchuhuallo in ixquixcauh in CCD, ica coxeyz in necoc ipan yeyantli nozo itlac quichihua ica tlacoyoyanicniuhltli in ammo napantla ca. Noihqui motlamamaltia quichihua tlailihvizohlli in tlapohualiztli, tlacuiloltamachihua ihuan ixtlacopinalcaquiliz ma ixica in tlayeyecolli in inuntin tequime huan ahcique ocachi tlacah itechpan in matlatl.

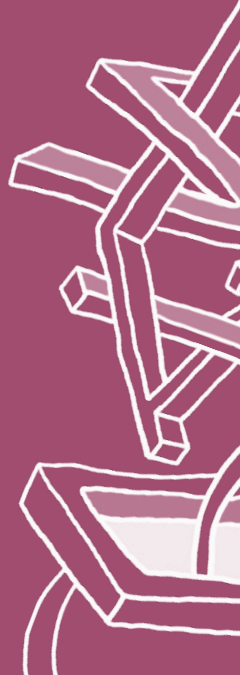
TAPAMCUENTLA

In quenin ca in *programa* tlein quiapiya ihtic huan itech teizcaltiliztli napantla, toconchihua ica miec yeyantli ihuan tlamachtlachah tlein ontlaçaqui motolinia altepeme. Ompun, ticchihua yanyotl inic ma ticaquican huan inic ma tiquinixmatizque tlein monequi ihuan mochihua ce tlanonotzallo ica cecen inintin tlacanechicoliz. In tlachihualoyan tapamcuentla tlahtlahuilia cente pacholiliztli in iuhcatiliz mahpilli in ixquixcauh tlanonotzallo in zan tlaçatl huan tlachihualo in altepeme ipan netlatlaniliztli, ahtotica tlachihualtica in icelnemiliz in tlazololiztli ipan mapil tepoztlachichihualoni nonca tiquinuyalialia.

LAB IN TLAHTOLLI HUAN TLACENTLALILIZNEMACHTILIZYOTL

In *laboratorio* quitemoa yez cente yeyantli in campa macehualtlahtoltin, ialtepeme in tlahtoque ihuan tlaçame in tlein motechmonequi huepahue quichihuaç in tlein yehuan quinequizque in ixquixcauh ihuan in tlein moyehualoa in yehuan. Ma conextican ica ahmo ohui ipan nepapan ohtli in onchicahuac ihuan tlaçetiliztli in tlaiximachiliztli in tlaçatequitl ica tepoztlachichihualoni ica in mahpil, onpehua in tlahtolli mohtac que cente tlaçentlaliliznemachtilizyotl mahyu in mohuaçcati in tlaçennemaztiliztin in ixquixcauh in occequi tlaçhializ in cemanahuac.

Nican tictemaca in tepoztlachichihualoni inic ilnamictia tlaçhializ huan tlahtoltica in macehualtlahtolli tlein tlahtoçua ipan tomexicatlalnan ihuan mochihua ica tepoztlachichihualoni tlaçentlaliliznemachtilizyotl ihuan motzicoa ihtic tlaçualcan in tlaçacho ica cente ixpathnaçua tlahtoliztica.



CCD TEPOZHUEHCATLATZOTZONALONI

Ca totepozhuehcatlatzotzonaloni itech matlatl. Ticpiah ce amapiapetlacalli coza hueyi in lahtolnonotzanamiqui, *programas, podcasts*, mahuiztemoa tepoztlanonotzonalonitica, tlatzilintlaxexeloni, xoxocacuautila ipan tlaacquilo ihuan tlein mach, nochi cente cuauhtlahtli tlin ohui mocaqui in tlein moloni.

E-AMOXTLAPOHUALIZTLI

Totlaiyahualizihcatiliztica monequi in amoxtli tlein moyolnonotza, in tlein quitohua amoxtli, ihuan ahuilaciamati ocachi ca nepa in tezcatlamahuizolli in molinime ihuan cototza in mahpilli iuhcatiliz. Ipanin matiliztli, in tlapechamoxchihua moectlalia in ce blog quitocayutia *Revista 404*; nauhamoxtli amoxchuihuacalli: *Incunables, Remediabiles* ihuan *Descargables*; ihuan ome *repositorios* tlein mocatia. In tlein onpia tlacotontli tlahuilamoxpohuatica huan *Patsatakua* in tlein moihtitia mahtlactli ihuan ce tlazatequime itech tlahtohuane in macehualtlahtoltin tlein huitze occeccan totlalnan tlein zan yehuan momachitia in iuh ica tlamanic tepozchichihualoni ica tlacentlaliliznemachtilizyotl.



TLETL IPAN OHPITZACO

In tlalmantli in Centro Cultural Digital, mocuepaz ceppa in metztli ipan cente hueyi mitotia ohpitzactli, ic ociel ticnamiqui tonacayo tlein tohuaxca huan ma toconchihua occeppa cente tenamiquiliztli tlamach ica miac papaquilitica.

Inin tlapalehuiliztli itlauctzinco Marinatzin Arteaga, mitotiatemachtini ihuan cihuateyacancatlamatilizmatini, tetlalhuia ipan ce teotlaca ipan cecen metztli in nochtlachah in tlein cuza mitotilizpahpaqui tlazalohuaznequi nozo ociel tlaneltilia in nepapan in quenin mitotia. Mazqui amitla ticmati techpanin zan inon ticnequiz timihtotiz ica chicahualiz in tlamach huan ticpanoz cualli.

Salsa on one, afrohouse, reguetón, rock and roll, k-pop, bachata, waistline magic, inon cate cequi in quenin mitotia in tlein titotizque ipan tlalmantli in CCD.

TLANONOTZALIZTLI QUI TLACENTLALILIZNEMACHTILIZYOTL

Ini tepalehuiliztli yehun quipia in ce mecatlanonotzallo tlein tlapohua cente tenamiquiliztiloyan ipan in tlein tononotza huan totlayeyecol ca in ilhuice tlacentlaliliznemachtilizyotl inic tlapatilizhuan mochihvaz cemanahuactin in campa nochtlachah cualli tiquinchantizqueh.

TLAPALEHUIA



IN TLATZILINI TLEIN PANO

In ticelehuia ipanin programa ma mochihuaz tlacualcan inic tlatzilini techihualtia ipan ce tenamiqiliztli ica tlachializ-caquilizyeyecoa huan in amantecayotl *escénicas*, matitica in tlatzilini in ocuache ca nepa ica occequintin temachtiliztli in tlein tlamacatilia in tlayeyecolli tlein timomati huan tonacayo. In tlatzilini in tlein pano ca cente tepalehuia ica ce tlatcatlatzotzonqui ihuan tlatzilini tlamatilizmatini Rogelio Sosa, moxexeloa ipan yexcan: inic centlamantli ipan ce calmecatl inic tlamatilizmatinime tlein hualquiza tlein yehuan quinpepenaltiz ica cente amatzatzilli tlapohtoc; inic ontlamantli ipan tlanechicotlaca ica tlachializtli ihtic ica toltecayotlaca ihuan tlatcatlatzotzoncamatinime. In yexcan in *programa* ca cente hueyi tlatzotzonaliztli inon tlamiz ica ailiznemi in tlamatilizmatinime tlein chanti nica CDMX noihqui toltecayotlaca tlein ammo nican nemi CDMX yehce tomexicatlaca. Noihqui moteitila in tlein mach in tlachihua in tlahuilitlatzotzonalli, tolteyocayocauiliz ihuan *medios mixtos* in totlalnan, el *programa* quitemoa ihquitiz in aliz-tolteyayo huan caquiliz tlein ontemoa ipan tlamanic, ipan in tlacentaliliznemachtilizyotl ihuan itechpa cuacualtzin tlayeyecolli ihtec ca.

MECAIXTLACOPINALLI MOLINIA IPAN

Titepalehuia Itlac *Sin Elipsis* inic ma mochihuaz cente *programa* de Mecaixtlacopinalli Club, tlein omolon ipan CCD. Ticchihua tlazatequitl in mecaixtlacopinalli tlein mohta zan ica ohuicayo itech tlatolpepechtin que *género*, nepapan nacayo, intla nemi ipan motolinia, nozo in aquehuan nenenqui in ihuicpa occeccan inic quitemoa tequitl. In tlazatequitl yulalihitica ica tenonotzaliztli, tlachihualoyan nozo *performances*.

AXAYOTL MAPILTICA

In Centro de Cultura Digital, Mexico Creativo, ihuan in Festival Internacional Cervantino, palehuizqueh ipanin *programa* tlein quipia ce caltequitl tlein tequti necoc ipanin hueyi altépetl Guanajuato. Ce izcaltilia *programa* huan tlachihua tlazatequitl inic telpochtlin tlein tlami ica teititiliztli ipan tlahuipanaloni in tlazatequitl ihuan teititiliztli in ilhuice tetlalhua tlacah.

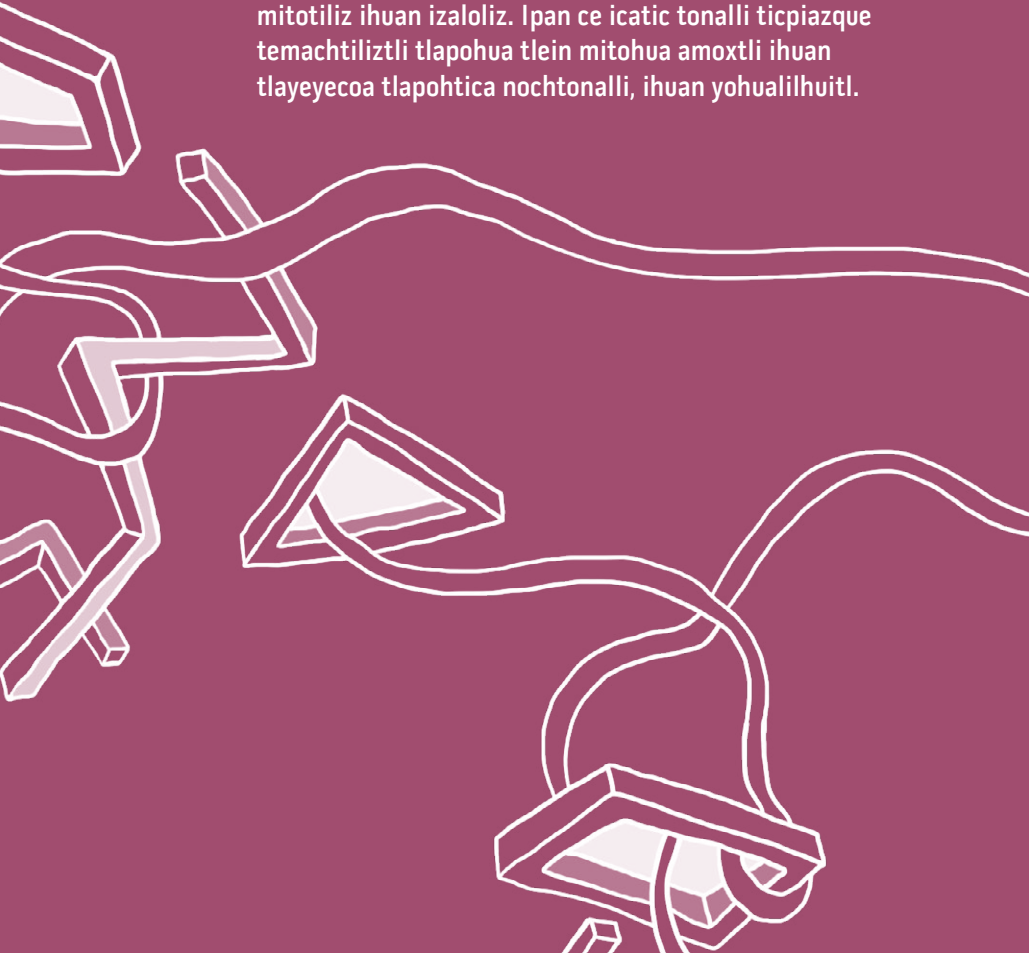
NEPAPAN MECAIXTLACOPINALLI

Cente *programa* oquihchi ica palehuia itech *Laboratorio Experimental de Cine (LEC)* tlein onpia mecatlaixcopinalli tlein tlayecania, tlein no quipia mapiltitica, *transmedia* ihuan occe tlanonotzaliztli tlein onpalehuia ma mochicahuaz in matlatl moilacatzoa ica occe tlachializtin. In elehuiloni ma mochihuaz ma ihtilia inuntin mecaixtlacopinalli tlein itenco mocahua in hueyi ilhuil ipampa tlein teilnamiquilia, políticas nozo itech tianquizcayotl.

Cente tlachializtli *desde el sur global*, ipan occequntin tlachializ, miacpan *autogestivas y locales*, cente mecatlaixcopinalli omochiuh ixquixcauh itenco, ica hueyi axiliztli in tlacetiliz ica *proyectos* tlein tlatemoa tlanonotzaliztin tlein ahmo miac mohta ihuan ma quintlapachohua in nepapan tlacah tlein acehque ipan CCD.

ITECH IN OHTLI ICA NEPA ILHUITL

Ticnemilia tlein in ilhuitl ca ce inon tlacentlaliliz-nemachtilizyotl in *política* chihua ihuan yolnematiliztli. Tocentlalique itlac tlilyohualli, tlapanco in tlayeyecolli tlatzotzonaltin ic ticalutizqueh nahui tlamach tllalia itechcacopa in tlatzotzonaliztli, in *formato de vinilo*, in mitotiliz ihuan izaloliz. Ipan ce icatic tonalli ticpiazque temachtiliztli tlapohua tlein mitohua amoxtli ihuan tlayeyecoa tlapohtica nochttonalli, ihuan yohualilhuitl.





**CENTRO
DECULTURA
DIGITAL**

centroculturadigital.mx | @CCDmx

Paseo de la Reforma s/n, esquina Lieja, Juárez, CDMX
CP 06600. phone 55 1000 2637